

CERTIFICATE OF LOCATION OF GOVERNMENT CORNER

East quarter _____ Corner of Section 16, Township 108, Range 42, 5th P.M.

STATE OF MINNESOTA, County of Murray

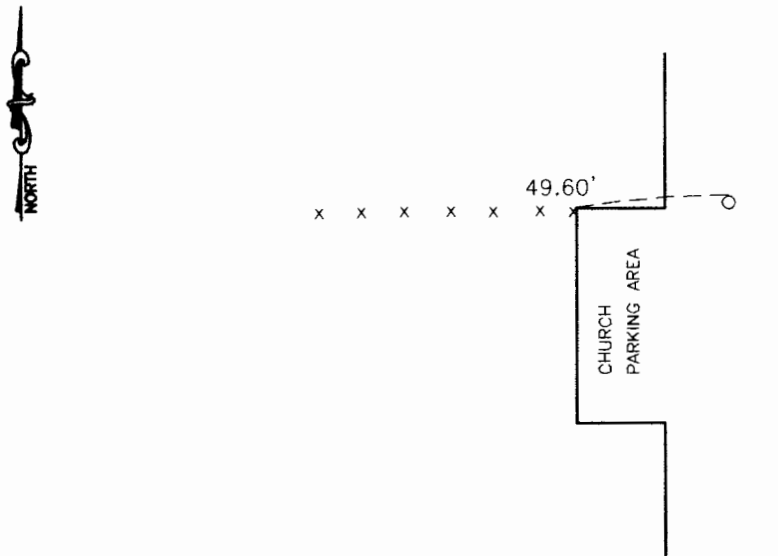
At the corner location shown on the sketch:

On 3-10-2000 found a 1/2" smooth rerod 4" below asphalt
DATE
and we raised it to the surface.

left monument as found, lowered monument, removed monument (explain)

placed a On _____
DATE

SKETCH OF REFERENCE TIES



Bottom steel fence post 49.60 feet West

Statement of evidence relative to this corner location is on back of page.

I hereby certify that this document and the data contained herein was prepared by me or under my direct supervision.

Deyle C. Mooney 12-29-00
SIGNATURE DATE

Registration No. 11943

Land Surveyor, Professional Engineer
 County Surveyor, County Engineer

OFFICE OF THE COUNTY RECORDER

County of _____

I hereby certify that this document was filed in the Co. Recorders office at _____ .M on the _____ day of JUL 24 2001 A.D. 19 _____

County Recorder *Jamie V. Johnson*
By _____, Deputy

DOCUMENT NO. _____

Statement of Evidence

On March 10, 2000 Moseng Land Surveying found a 1/2" smooth rerod 4" below asphalt set by the County Highway Department above a cast iron monument. We raised it up to the road surface.